

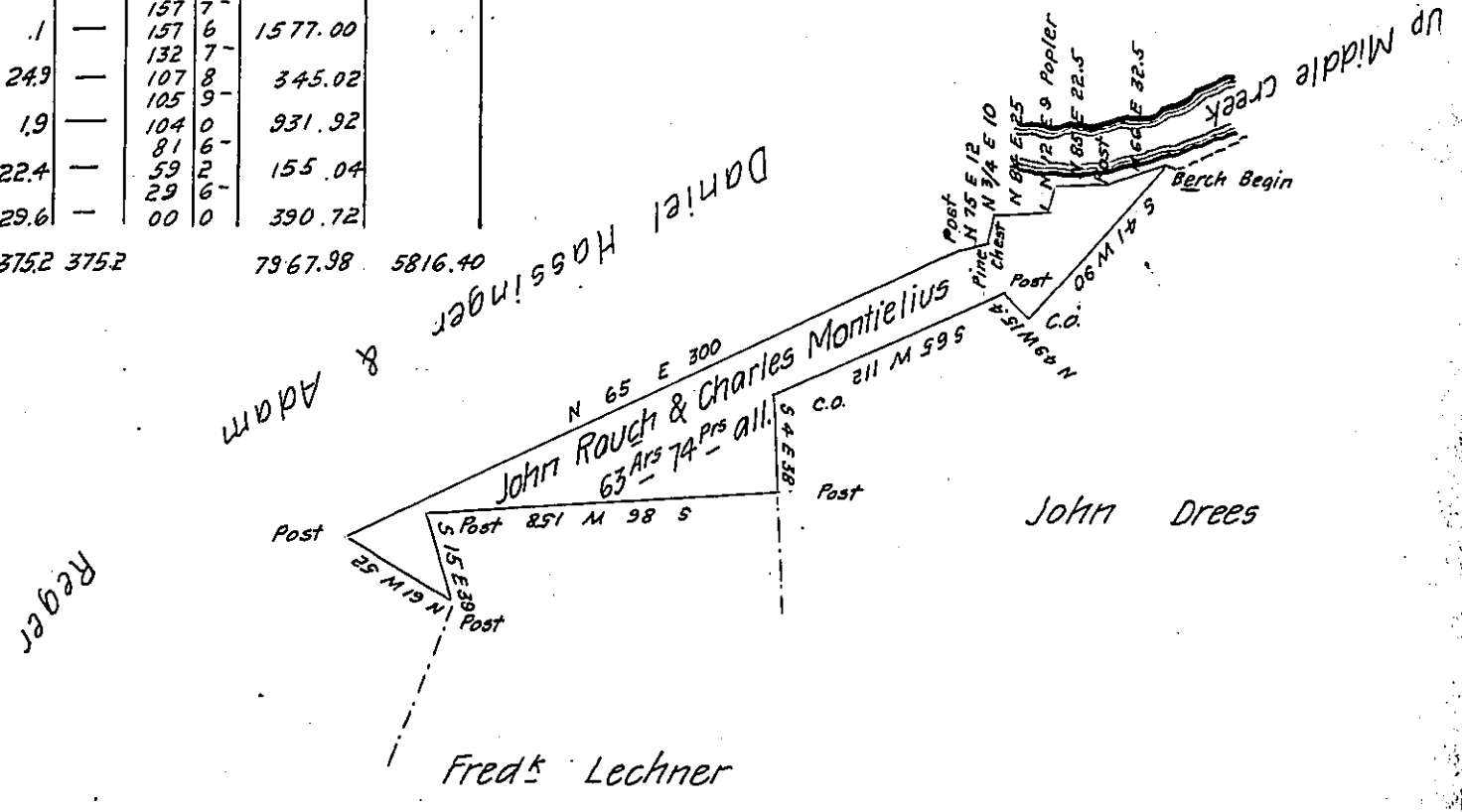
FORM No. 1.

John Roush and
Charles Montelius

			N.	S	E	W	M.	D.	N	S.
S	41	W	90	—	67.9	—	59.0	118 0		4006.10
N	49	W	134	10.1	—	11.6	141 2	129 6	1308.96	
S	65	W	112	—	47.3	—	101.5	242 7		11479.71
S	4	E	38	—	37.9	2.7	—	341 5		12942.85
S	86	W	158	—	11.0	—	157.6	496 4		5460.40
S	15	E	39	—	37.7	10.1	—	654 0		24275.03
N	61	W	52	25.2	—	—	45.5	633 8	17118.36	
N	65	E	300	126.8	—	271.9	—	679 3	57427.72	
N	75	E	12	3.1	—	11.6	—	724 8	525.14	
N	74	E	10	10.0	—	.1	—	452 9	1577.00	
N	84	E	25	2.6	—	24.9	—	181 0	345.02	
N	12	E	9	8.8	—	1.9	—	169 4	931.92	
N	85	E	22.5	1.9	—	22.4	—	157 6	155.04	
N	66	E	32.5	13.2	—	29.6	—	132 7	390.72	
								107 8		
								105 9		
								104 0		
								81 6		
								59 2		
								29 6		
								00 0		

7967.98 Northings
5816.40 Southings
2) 2151.58
1696) 1075.89 (63.74
1017.6
58 29
50 88
74.1

201.8 201.8 375.2 375.2 7967.98 5816.40



Situate in Beaver Township Snyder County formerly Union County Penn^a Surveyed by Robert G. H. Hayes D.S. the 21st day of October A.D. 1842 for John Roush & Charles Montelius in persuance of a Warrant granted to John Roush dated the 26th day of July A.D. 1842 Containring Sixty three acres and Seventy four perches & the usual allowance for roads &c. Return maid out by D. Weirick C.S. May the 9th A.D. 1870

Daniel Weirick C.S.

To Jacob M. Campbell Esq.
Surveyor General of Pa

IN TESTIMONY that the above is a copy of the original remaining on file in the Department of Internal Affairs of Pennsylvania, made conformably to an Act of Assembly approved the 16th day of February, 1833, I have hereunto set my Hand and caused the Seal of said Department to be affixed at Harrisburg, this eleventh day of September 1906

Loac D. Brown
Secretary of Internal Affairs.